

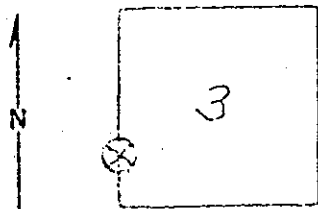
Index File No. D-13  
 T. 4 S R 8 W  
 Merid. Will.

CORNER RECORD (SEARCH)  
 (Ref. FSM 7151.4)

Tract or Survey No. \_\_\_\_\_  
 Cor. No. \_\_\_\_\_

R.D. HERB County TILLA. #660  
 N.F. SIUSI AW State ORE.

CORNER DIAGRAM



West - S  $\frac{1}{16}$

PHOTO IDENTIFICATION DATA

Photo No. \_\_\_\_\_  
 Filed At. \_\_\_\_\_  
 Object Ident. \_\_\_\_\_  
 Ident. By \_\_\_\_\_  
 Signature \_\_\_\_\_

PLANE COORDINATE POSITION DATA

State \_\_\_\_\_ Zone \_\_\_\_\_  
 X \_\_\_\_\_  
 Y \_\_\_\_\_  
 Estob. By \_\_\_\_\_  
 Agency \_\_\_\_\_

DESCRIBE CORNER MONUMENT FOUND

THIS IS A CERTIFIED CORNER ESTABLISHED BY CARTER, PRINGLE ASSEC. 5-74. THEY SET A PIPE IN A MOUND OF STONE - NO WITNESSES.

DESCRIBE BEARING TREES OR OTHER OFFICIAL ACCESSORIES FOUND

I WITNESS A 17" FIR, N. 7°30' W., 43 FT. SCRIBED "S  $\frac{1}{16}$  S3 CS BT." DIST. TO SIDE CENTER VAR. 21". NO OTHER WITNESSES AVAILABLE, SET ALUM. POST 1 1/2 FT. S. OF CORNER POINT WITH "PENALTY TO DESTROY" SIGN ATTACHED.

DESCRIBE CORNER LOCATION RELATIVE TO NEAR-BY FEATURES, ALSO HOW TO REACH CORNER

A LOG ROAD IS 10 FT. TO THE WEST.

Leonard Whitmore, Tilla. Co. Deputy Surveyor 2-75

Signature \_\_\_\_\_

Title \_\_\_\_\_ Division \_\_\_\_\_ Headquarters \_\_\_\_\_

Date \_\_\_\_\_ 7100-52-(3, 68)

Leonard Whitmore Forestry Tech Timber Herb 2-75

TILLAMOOK COUNTY REWITNESS

TILLAMOOK COUNTY REWITNESS

N.W. COR. SEC. \_\_\_\_\_  
 S. E. COR. DLC. # \_\_\_\_\_ T \_\_\_\_\_ R \_\_\_\_\_ W., WM. \_\_\_\_\_

HISTORICAL:


CONDITION

FOUND:


COMMENTS:

DATE: \_\_\_\_\_

1 SET